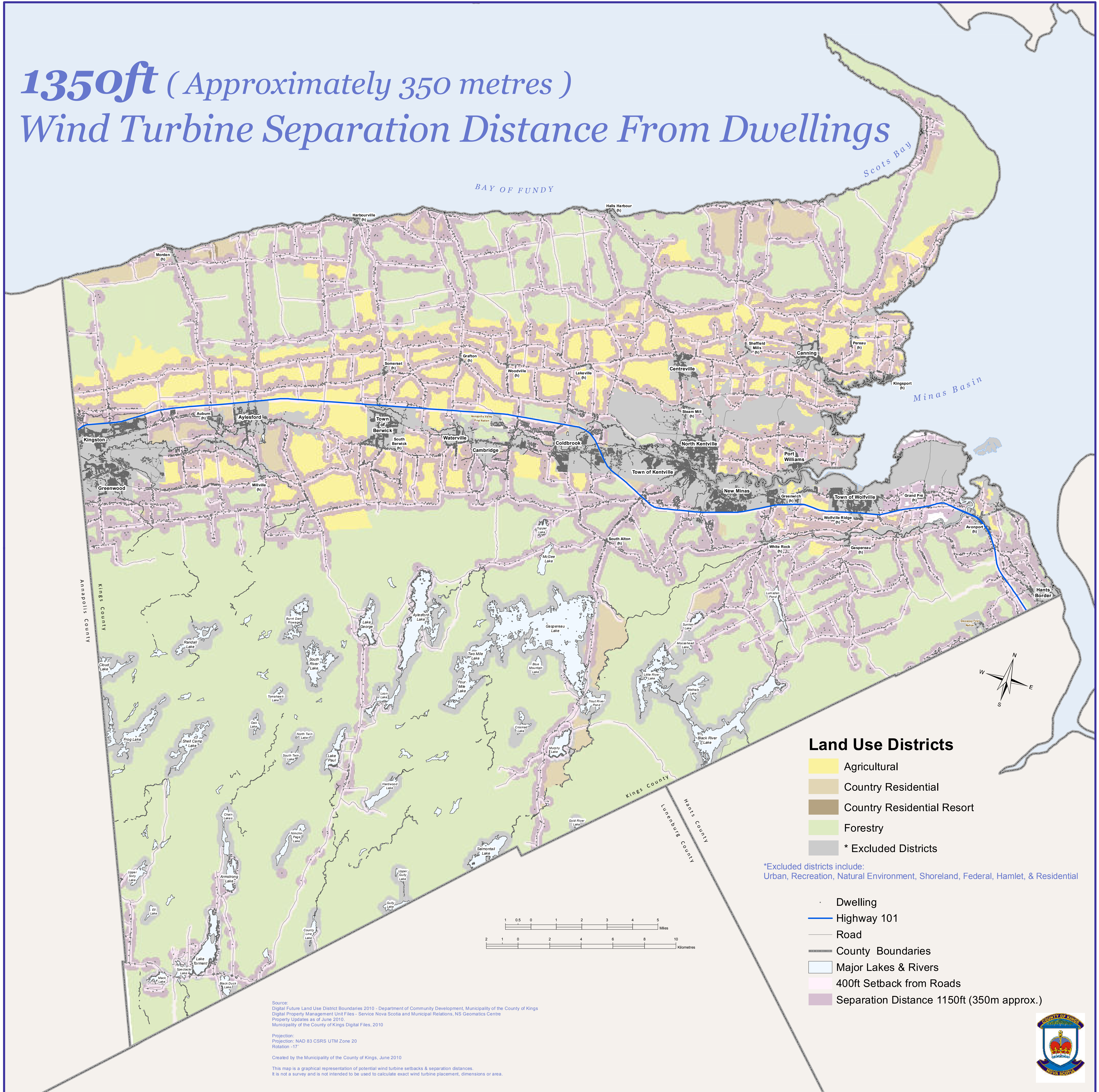


# 1350ft ( Approximately 350 metres ) Wind Turbine Separation Distance From Dwellings

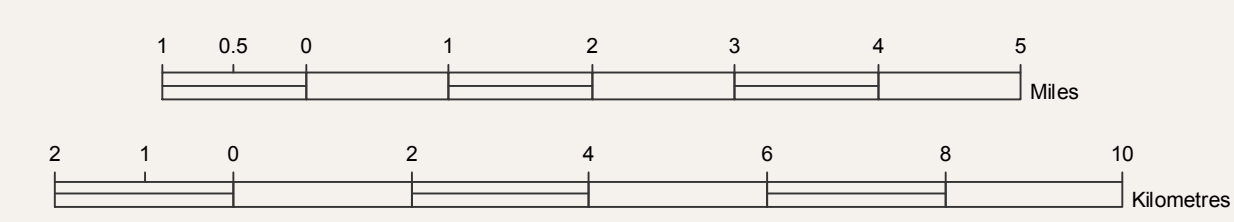


## Land Use Districts

- Agricultural
- Country Residential
- Country Residential Resort
- Forestry
- \* Excluded Districts

\*Excluded districts include:  
Urban, Recreation, Natural Environment, Shoreland, Federal, Hamlet, & Residential

- Dwelling
- Highway 101
- Road
- County Boundaries
- Major Lakes & Rivers
- 400ft Setback from Roads
- Separation Distance 1150ft (350m approx.)



Source:  
Digital Future Land Use District Boundaries 2010 - Department of Community Development, Municipality of the County of Kings  
Digital Property Management Unit Files - Service Nova Scotia and Municipal Relations, NS Geomatics Centre  
Property Updates as of June 2010.  
Municipality of the County of Kings Digital Files, 2010

Projection:  
NAD 83 CSRS UTM Zone 20  
Rotation -17°

Created by the Municipality of the County of Kings, June 2010

This map is a graphical representation of potential wind turbine setbacks & separation distances.  
It is not a survey and is not intended to be used to calculate exact wind turbine placement, dimensions or area.

